

Informations *Rapides*



31 octobre 2012 - n° 273 **CONJONCTURE**

■ Indices of agricultural prices - September 2012

Overall producer price of agricultural products increased in September

In September, overall producer price of agricultural products increased by 3.6 % compared to August ; year-over-year it rose by 10.7%

Price of cereals stabilized at a high level (-0.5% over one month). The decrease in crop in the Black Sea region, as well as a lack of rain in Australia, kept the price of wheat up. Conversely, the crop of maize in the Northern hemisphere raised the available quantities, leading to a decrease in its price.

Producer price of cereals

Base year : 2005



Source : Insee

Price of oleaginous also remained firm (+0.1 %), due to a high demand for feed oil.

Price of potatoes went up strongly year-over-year (+81.3 %). The new crop was less considerable than last year in North-Western Europe.

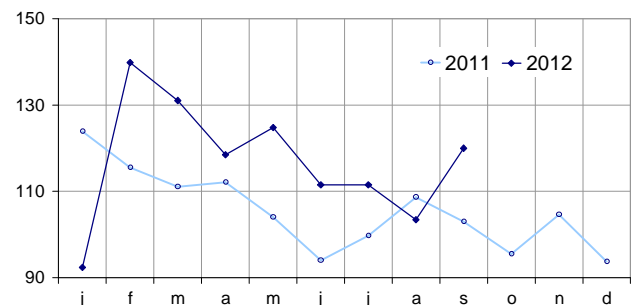
Price of wine rose in September (+1.1 %), due to quality wine (+1.9 %).

The producers of seeds, as well as those of tree nursery, raised their annual prices in September.

Price of fresh fruits increased year-over-year (+16.2 %) in September. Peach and plum became more expensive : the quantities put on sale for these were more in line with the demand than last year. The prices of apple and pear noticeably rose as a result of a sharp decrease in production for these two fruits in Europe.

Producer price of fresh vegetables

Base year : 2005

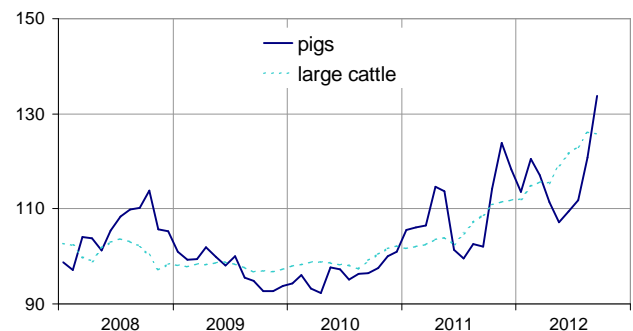


Source : SSP (ministry of agriculture)

Price of fresh vegetables rose year-over-year (+16.4 %). Prices of tomato, salad and onion went up due to a decreasing production this season and to a moderate foreign competition for tomato. On the other hand melon did not sell well.

Producer price of pigs and large cattle

Base year : 2005 ; seasonally adjusted



Source : Insee

On a seasonally adjusted basis, price of animals went up in September (+2.8 %). Price of pigs kept up rising (+10.8%), reflecting a dropping national supply : the lack of profitability in this sector has led to a progressive decline in production for several months. Price of poultry partly reflected the increase in price of chicken feed.

Indices of producer prices of agricultural products (IPPAP)

Base year 2005

	weights	September 2012 raw	Variation as % over: a month	3 months seasonally adjusted data	a year raw
Agricultural goods output excluding fruits and vegetables	1000	143.0	+3.6	+7.9	+10.7
	878	145.7	+2.9	+8.5	+10.3
Crop output (excluding fruits and vegetables)	417	164.9	+3.7	+14.0	+14.4
Cereals	115	244.0	-0.5	+20.8	+22.7
of which soft wheat	63	260.6	-0.1	+21.2	+30.3
grain maize	27	219.9	-2.3	+22.1	+18.2
Potatoes	19	218.0	///	///	+81.3
Wines	161	122.4	+1.1	+0.7	+2.0
quality wines	140	122.7	+1.9	+1.9	+3.5
other wines	21	120.4	-3.7	-6.5	-7.2
Oleaginous	28	235.3	+0.1	+8.8	+19.1
Horticultural products	51	103.6	+2.1	+2.9	-1.0
Other crop products	43	115.1	+5.0	+9.1	+3.9
Fruits and vegetables (1)	122	122.9	///	///	+14.4
Fresh vegetables	61	120.0	///	///	+16.4
Fresh fruits	39	135.3	///	///	+16.2
Animal output	461	128.4	+1.9	+2.5	+5.9
Animals	286	131.2	+2.8	+7.6	+14.0
of which large cattle	108	126.0	-0.4	+3.4	+16.3
calves	29	117.6	-0.3	-0.6	-0.7
pigs	64	139.2	+10.8	+22.2	+31.1
sheep	14	121.8	+2.0	+7.7	+6.2
poultry	59	145.9	+3.0	+6.9	+6.7
of which chicken	26	145.7	+3.0	+7.6	+7.0
Milk	159	116.9	0.0	-6.5	-8.5
of which cow milk (2)	148	117.3	0.0	-7.0	-9.0
Eggs	13	208.2	+2.0	-1.5	+18.8

(1) Including vegetables for industry.

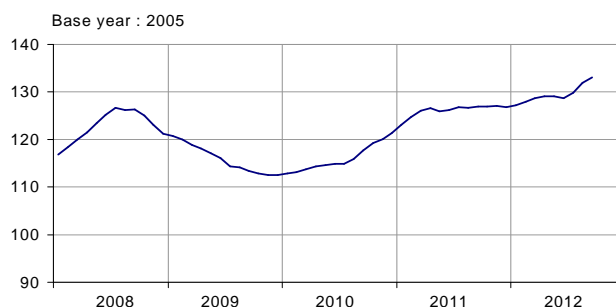
(2) The price for September is not yet known and therefore is estimated by carrying forward the seasonally adjusted price of August.

Sources: INSEE - SSP (ministry of agriculture)

Purchase price of the means of agricultural production increased in September

The price of intermediate consumptions rose over one month (+1.2 %) mainly as a result of higher prices for animal feeding stuffs. Year-over-year, it went up by 4.7 %, due to those same products and energy too. On the other hand, price of investment slightly decreased (-0.3%).

Purchase price of the means of agricultural production



Sources : Insee - SSP (ministry of agriculture)

Indices of purchase prices of the means of agricultural production (IPAMPA)

Base year 2005

	weights	September 2012	Variation as % over a month		
Total input	1000	133.0	+0.9	+3.4	+4.7
Goods and services currently consumed in agriculture	758	137.2	+1.2	+4.4	+5.9
Energy (1)	84	155.7	0.0	+9.6	+9.7
Seeds	51	117.7	+0.9	+0.5	+2.2
Fertilisers and soil improvers	92	167.0	+0.5	+1.5	+2.3
Plant protection products	77	106.7	-0.3	0.0	+0.1
Animal feeding stuffs	189	159.9	+4.3	+10.9	+14.2
Veterinary expenses	38	118.2	+0.2	+0.4	+2.8
Small equipment and tools	14	111.9	-0.3	0.0	-0.5
Maintenance of materials	56	130.4	0.0	+0.7	+3.6
Maintenance of buildings	9	124.0	0.0	-0.2	+1.9
Other goods and services	149	112.5	-0.8	-0.4	+0.3
Goods and services contributing to investment	242	120.0	-0.3	0.0	+1.2
Material	170	117.2	-0.3	+0.2	+1.3
Tractors	71	114.0	-0.3	+0.2	+1.0
Machinery and plant for cultivation	36	119.7	0.0	+0.2	+1.3
Machinery and plant for harvesting	37	116.6	-1.9	-0.6	+0.5
Utility vehicles	16	113.6	-0.2	-0.4	+1.5
Buildings	72	126.7	-0.2	-0.5	+0.9

(1) The repayment of 5 cents per litre of fuel of the domestic tax on energetic products (TICPE) benefiting farmers has been applied in advance for the year 2012

Sources : Insee - SSP (ministry of agriculture)

To know more about french indices of agricultural prices :

The index of producer prices for agricultural products (IPPAP) measures the evolution of products price when they are put on the market for the first time. They are set to 100 in 2005, the coefficients for their weights come from national accounts and are based on the year 2005. The weight-coefficients of fresh fruits and vegetables, early potatoes and cut flowers change every month. That is to reflect their very seasonal pattern. As a result their variations must be interpreted year-over-year. Seasonally adjustments address to cattle, milk, cut flowers as a whole, and to some other aggregates.

The methodology can be found via the link hereafter :

<http://www.insee.fr/fr/publications-et-services/sommaire.asp?codesage=IMET121&nivgeo=0>, and for fresh vegetables and fruits.

in Agreste - Chiffres et Données - n°165 - février 2005.

The index of purchase prices of the means of agricultural production (IPAMPA) reflects the variations of goods and services used in the agricultural process. They are based on the survey conducted by the ministry of agriculture at wholesale dealers of fertilisers, feed for animals, phytosanitary products, seeds, veterinary products and services and small equipment ; IPAMPA are also based on output prices industry (IPP) for energy and equipment goods ; on consumption prices (IPC) for fuel ; and on construction index for buildings (BT and TP) and their maintenance. They are based on the year 2005.

Further datas (historical datas. simplified methodology) are located on the HTML page of this publishing :

<http://www.insee.fr/fr/themes/info-rapide.asp?id=80>

- Find directly historical data in the database « Base de Données Macro-économiques » : [G1123](#), [G1124](#)

- Press contact : bureau-de-presse@insee.fr

Next publishing : November 30th at 12 a.m